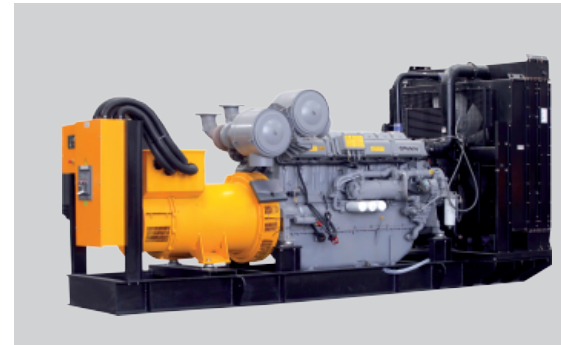


PT1000 - PT1100S



Ratings @ 0.8 PF		Prime Rating	Stand-by Rating
Voltage*¹	Frequency*²	PT 1000*³	PT 1100S*⁴
230/400 V	50 Hz	1000 KVA	1100 KVA
277/480 V	60 Hz	998 KVA	1100 KVA

The above ratings represent the generating set capability guaranteed within ±3% at the reference conditions equivalent to those specified in ISO 8528/1.



Notes

1. The applicable voltage range is 380V to 415V for 50Hz applications and 380V to 480V for 60Hz applications. For other voltage consult factory.

2. This generating set is of fixed speed of either 1500rpm or 1800rpm.

3. PT1000 is the prime power rating of the generating set, where a variable load and unlimited hours usage are applied on the generating set with an average load factor of 80% of the prime rating over each 24 hour period. Noting that a 10% overload is available for 1 hour in every 12 hours operation.

4. PT1100S is the standby power rating of the generating set, where a variable load limited to an annual usage up to 500 hours is applied, with 300 hours of which may be continuous running. Noting that no overload is permitted.

Certifications



- The complete Generating Set is type-tested according to ISO 8528-8 Standard.



- The control panel is certified by an ISO 17025 accredited laboratory to have IP55 according to IEC 60335



Quality ISO 9001 SAI GLOBAL

Dimensions

Length	4900 mm
Width	2050 mm
Height	2470 mm
Weight	7165 Kg

Technical Data

Engine model

Perkins 4008TAG2A / 4008TAG2

Cylinders

8 - vertical in-line

Aspiration

Turbocharged & A/A charge cooled

Combustion

Direct injection

Cooling System

Water cooled

Displacement

30.561 liters

Oil consumption

0.53 g/kWh

Lube oil capacity

153 liters

Coolant capacity

162 liters

Governor

Electronic-Digital

Speed

1500 rpm 1800 rpm

Fuel Consumption @ 100% Load

220 L/H 213 L/H

Fuel Consumption @ 75% Load

160 L/H 206 L/H

Fuel Consumption @ 50% Load

108 L/H 205 L/H

Radiator Cooling Air Flow

1350 m³/min 1290 m³/min

Max exhaust gas flow

200 m³/min 202 m³/min

Emissions regulations

-

The above performance data are valid as per the following specs:

- Diesel Fuel is according to BS2869 Class A2 or equivalent.
- Lubricating oil is according to API CH4 (15W/40).
- The coolant should be 50% antifreeze and 50% distilled water.

Alternator model

Leroy Somer LSA 49.1 L11

Regulation

± 0.5 %

International protection

IP23

Insulation class

H

Terminals

6

Frequency

50 Hz 60 Hz

Coolant Air flow

1.2 m³/s 1.4 m³/s