

Compact Sound Proof Canopy (SEC) - 9 to 500 KVA

This type is specifically designed for tight spaces where other types fail to be installed. With its modern design that uses the latest technologies in fabrication and paint, it is developed in a way that allows its easy dismantling and reassembly.

Canopy Structure

- 2 mm Galvanized-Steel Body and Components, with ability to dismantle all parts.
- 5 cm Fiber Glass for Sound Insulation.
- Heat-treated highly corrosion-resistive powder coating.
- Stainless-Steel Locks and Black Zinc Die-Cast Hinges.
- Exhaust silencing system in the interior of the enclosure.

Service and Maintenance

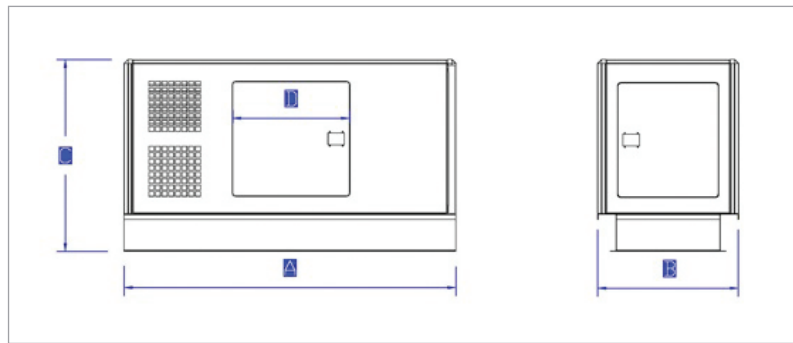
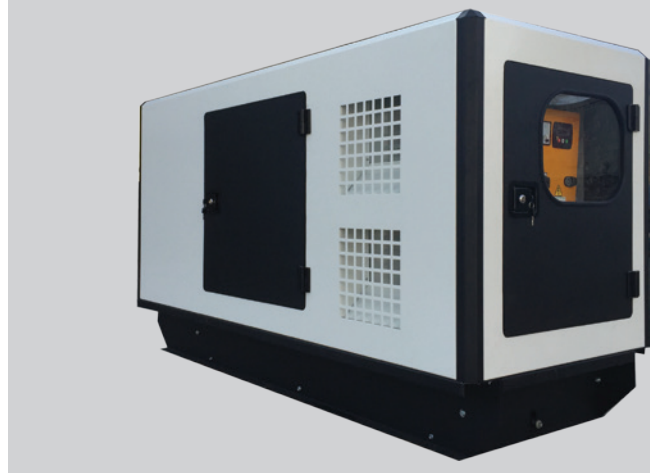
- 4 large doors each on 1 side to allow easy maintenance access.
- Plexiglas window for external viewing of the control panel fitted in a lockable door.
- Radiator-fill access through a special plastic cap on the top of the enclosure.
- Lube Oil Pipe outlet to allow easy drainage.

Security and Safety

- Fuel Fill and Battery are secured through lockable doors.
- Emergency Stop Push Button mounted on the exterior of the enclosure (optional)

Loading and Shipment

- Compact Size allowing optimal shipment capacity.
- Lifting Holes on the sides of the Canopy Base



- Image is for reference only and might not be 100% reflective of the actual product.
- Due to continuous improvements, above data is subject to change without prior notice.



Sectionalised Sound Proof Canopy (SEC)		Sound Pressure Levels (dBA)												Total Weight	Dimensions			
		50 Hz						60 Hz										
		1 m		3 m		7 m		1 m		3 m		7 m		Kg	A _{mm}	B _{mm}	C _{mm}	D _{mm}
Generating set	Powertech	0%	100%	0%	100%	0%	100%	0%	100%	0%	100%	0%	100%					
Engine Model	KVA	Load	Load	Load	Load	Load	Load	Load	Load	Load	Load	Load	Load					
403A-11G	9	72.5	73.8	69.5	70.8	66.5	67.8	74.2	75.5	71.2	72.5	68.2	69.5	680	2000	850	1184	704
403A-15G	12.5	72.5	73.8	69.5	70.8	66.5	67.8	74.2	75.5	71.2	72.5	68.2	69.5	700	2000	850	1184	704
404D-22G	20	72.5	73.8	69.5	70.8	66.5	67.8	74.2	75.5	71.2	72.5	68.2	69.5	740	2000	850	1184	704

Sectionalised Sound Proof Canopy (SEC)		Sound Pressure Levels (dBA)												Total Weight	Dimensions			
		50 Hz						60 Hz										
		1 m		3 m		7 m		1 m		3 m		7 m		Kg	A _{mm}	B _{mm}	C _{mm}	D _{mm}
Generating set	Powertech	0%	100%	0%	100%	0%	100%	0%	100%	0%	100%	0%	100%					
Engine Model	KVA	Load	Load	Load	Load	Load	Load	Load	Load	Load	Load	Load	Load					
1103A-33G	30	74.7	76.2	71.2	72.7	68.2	69.7	76.6	78.1	73.1	74.6	70.1	71.6	900	2270	1050	1270	704
1103A-33TG1	45	73.3	74.8	69.8	71.3	66.8	68.3	75.2	76.7	71.7	73.2	68.7	70.2	1045	2270	1050	1270	704
1103A-33TG2	60	73.3	74.8	69.8	71.3	66.8	68.3	75.2	76.7	71.7	73.2	68.7	70.2	1200	2270	1050	1270	704
1104A-44TG2	80	73	75	71	73.5	68	70.5	76	78	74	76.5	71	73.5	1407	2650	1120	1410	1128
1104C-44TAG2	100	73.5	75.5	71.5	74	68.5	71	76.5	78.5	74.5	77	71.5	74	1700	2650	1120	1410	1128
1106A-70TG1	135	74	76	72	74	69	71	77	79	75	77	72	74	2225	3100	1100	1700	750
1106A-70TAG2	150	74.5	76.5	72.5	74.5	69.5	71.5	77.5	79.5	75.5	77.5	72.5	74.5	2525	3100	1100	1700	750
1106A-70TAG3	180	75	77	73	75	70	72	78	80	76	78	73	75	2975	3650	1450	1950	810
1106A-70TAG4	200	79.7	82.4	76.2	78.3	73.2	75.3	82.6	85.3	79.1	81.2	76.1	78.2	3275	3650	1450	1950	810
1506A-E88TAG3	250	79.7	82.4	76.2	78.3	73.2	75.3	82.6	85.3	79.1	81.2	76.1	78.2	4000	4000	1450	1950	810
1506A-E88TAG5	300	79.7	83	77	79	74	76	83	86	80	82	77	79	4750	4000	1450	1950	810
2206A-E13TAG2	350	81.2	83.9	77.7	79.8	74.7	76.8	84.1	86.8	80.6	82.7	77.6	79.7	5500	4400	1700	2400	1036
2206A-E13TAG3	400	81.2	83.9	77.7	79.8	74.7	76.8	84.1	86.8	80.6	82.7	77.6	79.7	6250	4400	1700	2400	1036
2506A-E15TAG1	450	81.9	84.6	78.4	80.5	75.4	77.5	85	87.7	81.5	83.6	78.5	80.6	7000	4700	1700	2400	995
2506A-E15TAG2	500	81.9	84.6	78.4	80.5	75.4	77.5	85	87.7	81.5	83.6	78.5	80.6	7750	4700	1700	2400	995
2806A-E18TAG1A*	600	83.1	86	79.6	82.9	76.6	79.9	86.3	89.2	82.8	86.1	79.8	83.1	9250	5500	2400	2470	822
2806A-E18TAG2A*	650	83.1	86	79.6	82.9	76.6	79.9	86.3	89.2	82.8	86.1	79.8	83.1	10000	5500	2400	2470	822
4006-23TAG2A*	725	83.8	86.7	80.3	83.6	77.3	80.6	87.3	90.2	83.8	87.1	80.8	84.1	11500	5750	2400	2470	822
4006-23TAG3A*	800	84.1	87.6	80.6	84.5	77.6	81.5	87.5	91	84	87.9	81	84.9	11800	5750	2400	2470	822

* Compact canopy with completely welded structure - Not Sectionalized